

RESOLUTION NO. 07-22

**RESOLUTION AMENDING RURAL SPECIAL IMPROVEMENT MAINTENANCE
DISTRICT KNOWN AS R.S.I.D. #764M
PIONEER ROAD ESTATES SUBDIVISION-STREETS, PARKS AND DRY HYDRANT**

WHEREAS, the Board of County Commissioners of Yellowstone County, Montana, have been presented with a valid petition to create a Rural Special Improvement Maintenance District which shall be known as R.S.I.D. #764M for Pioneer Road Estates Subdivision-Streets, Parks, and Dry Hydrant described in Exhibit A as lots 1-A and lot 2 of UGC Subdivision, and lots 1-26 block 1, and lots 1-6 block 2 of Pioneer Road Estates Subdivision and more particularly shown in Exhibit B (map) and,

WHEREAS, the boundaries of R.S.I.D. 764M overlap the boundaries of existing maintenance R.S.I.D. 738M, UGC Subdivision;

1. R.S.I.D. 738M UGC Subdivision will be dissolved and replaced by R.S.I.D. 764M Pioneer Road Estates Subdivision, and
2. The assets of R.S.I.D. 738M will be transferred to R.S.I.D. 764M.

WHEREAS, under MCA 7-12-2102(2), a petition was presented to create a rural special improvement district that contains the consent of all (100%) of the owners of property to be included in the district;

WHEREAS, the Board of County Commissioners finds, determines and declares that:

1. The public interest or convenience requires the creation of a Rural Special Improvement Maintenance District as hereinafter described;
2. The costs of providing maintenance shall be borne by owners of the property included within the boundaries of the Rural Special Improvement Maintenance District with all existing and future lots being assessed an equal amount on a per lot basis;
3. The purpose of forming the District is to provide for weed control, street and park maintenance and fire hydrant tank maintenance located within the boundaries of this District;
4. The Commissioners have been presented with a valid Petition to create the proposed District;

NOW, THEREFORE, BE IT RESOLVED by the Board of County Commissioners of Yellowstone County as follows:

1. The Commissioners have acquired jurisdiction to create a Rural Special Maintenance District No. 764M to provide for weed control, street and park maintenance and fire hydrant tank maintenance. See exhibit C for annual maintenance costs.

2. All of the costs of the District shall be assessed equally on a per lot basis for all existing and future lots (see Exhibit D). The boundaries of this District are shown on the map attached as Exhibit B and described in Exhibit A.

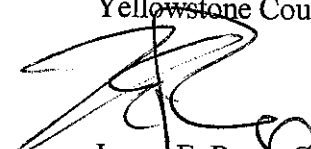
3. The number of the Rural Special Maintenance District thereof shall be **No. 764M**.

4. All lots will benefit from proposed R.S.I.D. The total cost of the maintenance will be assessed on a per lot basis.

PASSED AND ADOPTED by the Board of County Commissioners of Yellowstone County, Montana, this 17th day of April, 2007.

Board of County Commissioners
Yellowstone County, Montana

(SEAL)



James E. Reno, Chair



Bill Kennedy, Member

ATTEST:



John Ostlund, Member

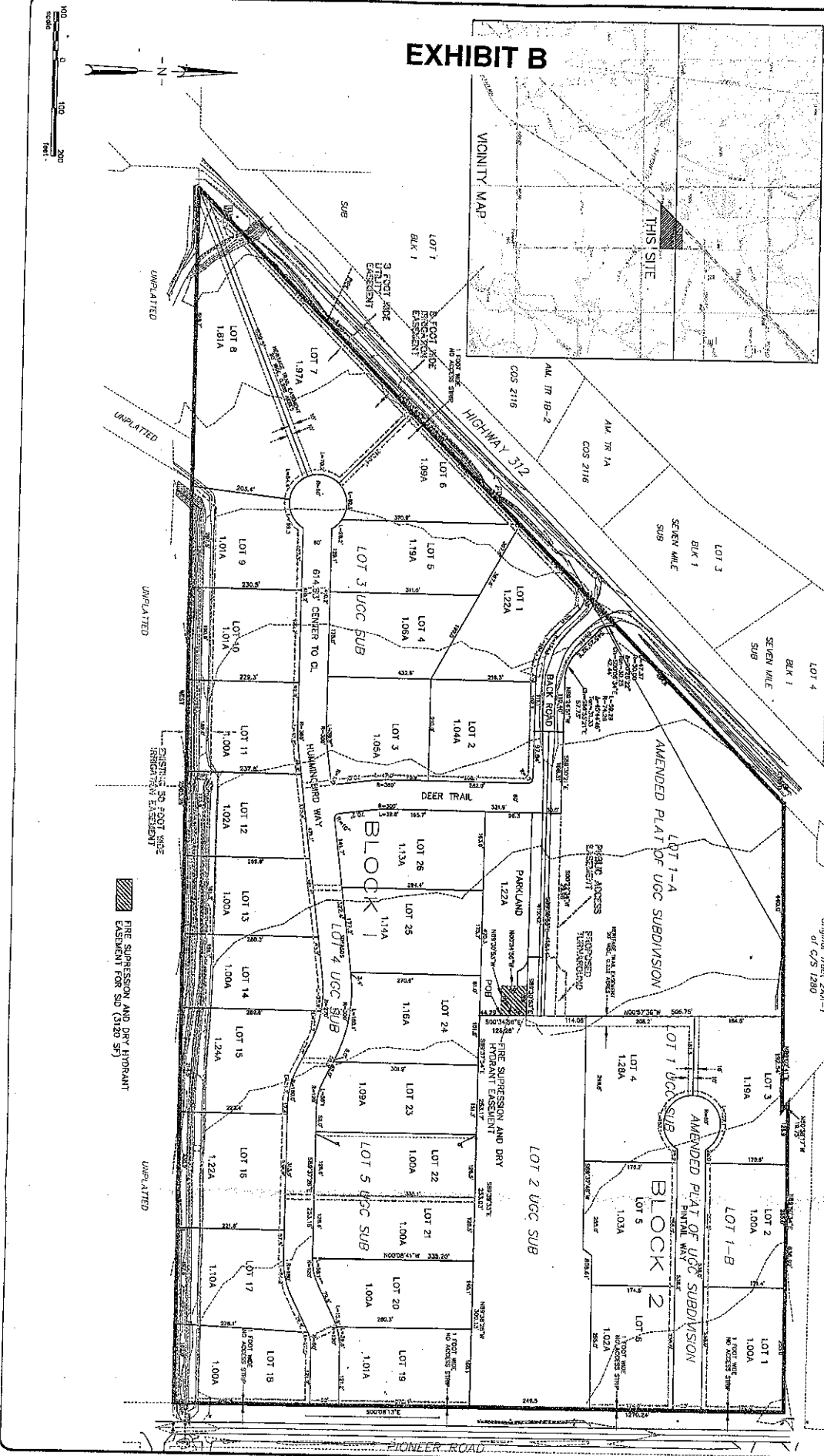


Tony Nave
Clerk and Recorder

FIRE SUPPRESSION, ROADWAY AND PARK PIONEER ROAD ESTATES SUBDIVISION

BEING THE AMENDMENT OF LOTS 2, 3, 4 & 5 OF UGC SUBDIVISION AND LOTS 1-A & 1-B OF UGC SUBDIVISION AMENDED, SAID TRACT OF LAND LOCATED IN THE SW1/4 OF SECTION 31, T.2N, R.27E, P.M.M., YELLOWSTONE COUNTY, MONTANA

EXHIBIT B



**EXHIBIT A
FIRE SUPPRESSION, ROADWAY AND PARK
PIONEER ROAD ESTATES SUBDIVISION**

EXHIBIT C

PETITION TO ESTABLISH A RURAL SPECIAL IMPROVEMENT DISTRICT (RSID)

**SECTION C
ESTIMATED ANNUAL MAINTENANCE COST**

FALL MAINTENANCE:

ACTIVITY	ESTIMATED COST
Tank Filling (water), Snow Plowing (Ice Control), Mowing/Landscaping	\$ 600.00
Weed Control	\$ 400.00

WINTER MAINTENANCE:

ACTIVITY	ESTIMATED COST
Tank Filling (water), Snow Plowing (Ice Control)	\$ 600.00
	\$

SPRING MAINTENANCE:

ACTIVITY	ESTIMATED COST
Tank Filling (water), Snow Plowing (Ice Control), Mowing/Landscaping	\$ 600.00
Weed Control	\$ 400.00

SUMMER MAINTENANCE:

ACTIVITY	ESTIMATED COST
Mowing/Landscaping, Asphalt Patching/Chip Sealing/Crack Sealing	\$ 4200.00
Weed Control, Signage Maintenance	\$ 300.00

TOTAL ESTIMATED ANNUAL MAINTENANCE COST: \$7,100.00

PETITION TO ESTABLISH A RURAL SPECIAL IMPROVEMENT DISTRICT (RSID)

EXHIBIT D

SECTION D
METHOD OF ASSESSMENT

CHOOSE A METHOD OF ASSESSMENT:

- Square Footage
- Equal Amount - Amount to be spread equally.
- Front Footage
- Other (Describe)

